



4901

hand-drawn

for light and medium-weight curtains

Recessed profile for an elegant finish

4901



hand-drawn

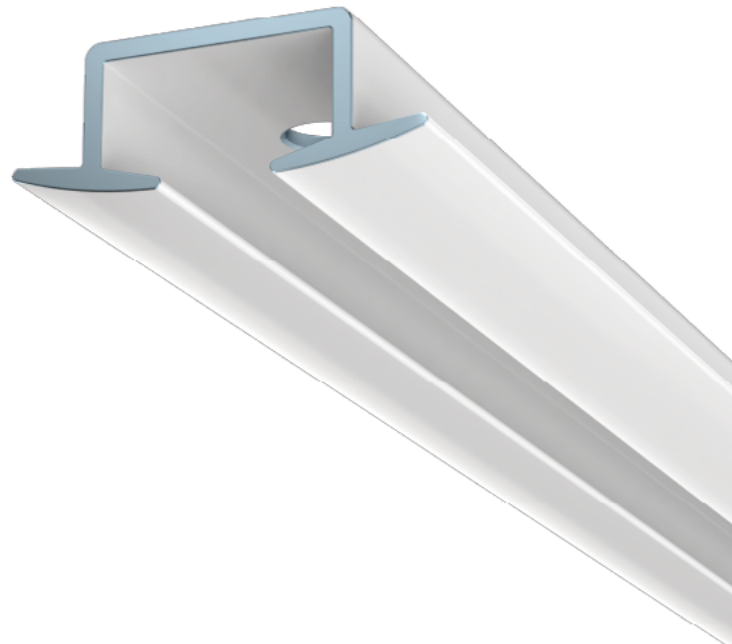
for light and medium-weight curtains

Recessed & elegant finish

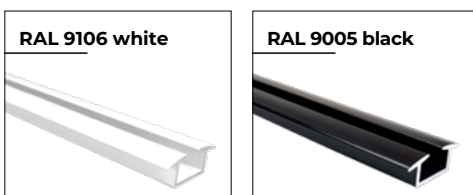
The 4901 is our newest rail of our recessed assortment. An elegant and smooth rail which enables a seamless recessed installation.

All materials are selected with care and according to our highest standards. This to ensure a smooth and silent operation, also in the bends. The rail can be provided in one piece: no resistance in corners.

- A recessed profile which ideally is installed in a channel cut wooden surface.
- The wide flaps create a seamless transition with the ceiling.
- The real white RAL 9016 colour matches the most common finishing of the ceiling. The profile is also available in black (RAL 9005).
- The profile is compatible with our Flow/Wave gliders.
- The tapering flaps create a modern finish. Blind mounting is possible.
- Ideal profile for sheer and medium-weight blinds.
- Exceptional bending qualities.



Standard colours



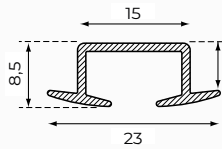
High quality, wear-resistant coating, highly colourfast, UV-resistant.
Other RAL colours & special coatings on request.

Features

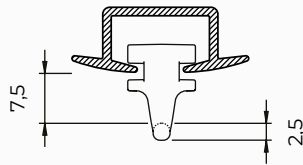
Material: aluminium
Colour: white and black
Dimensions: 23 x 8,5 mm
Weight profile: 127 gr/m
Ceiling mounting punch holes:
Ø4mm each 15cm

Profile/ gliderspecifications

Aluminium profile:



Glider:



Colours with RAL code and lengths (m):

	RAL	4	5	6	7
white	9016			•	
black	9005			•	

Mounting surface:

- wood

Bracket type:

- ceiling: screws
- no wall or distance supports

Bending:

bending radius	bending tool
R 10 cm	1012
R > 80 cm	1018

R 10 cm

R > 80 cm

Flow

The Qurails Flow System keeps pleats in curtains consistent. It can be used with small and wide channel tracks and, because of the broad assortment of components, it can be integrated in hand-drawn, cord-pulled and electrically operated systems.

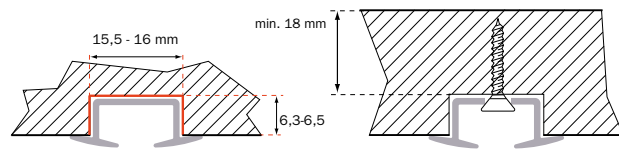
The Flow System can also be used with curved curtain tracks. For further information, see the [Flow product data sheet](#).

Specification guide

Material

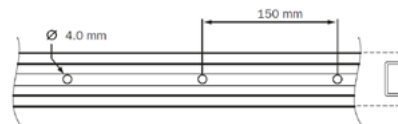
- Aluminium EN AW-6060-T66.
- Anodised in accordance with the Qualanod standard.
- Powder coated in accordance with the Qualicoat standard.

Montage

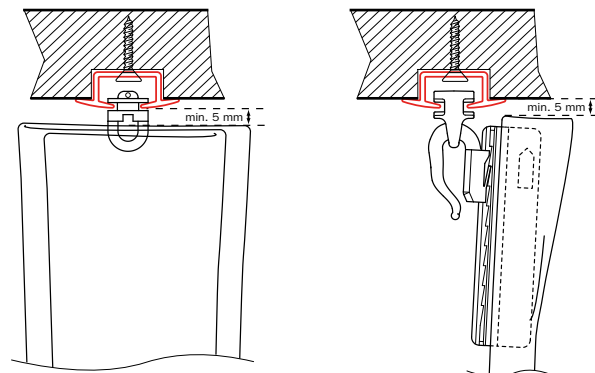


Slot sizes

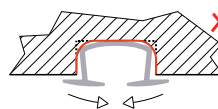
Assembly with screw 2614



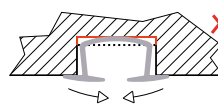
Punch type



Advice on the trench shape:



Make sure that the milled groove has right angles, otherwise the profile will deform.



Make sure that the milled groove is not too deep, otherwise the profile will deform.

General for bends:
first bend the rail and make the mounting slot accordingly.

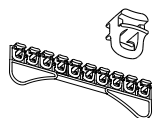


Standard parts

Curtain transport



4001
end stop
white / grey / black



4010
glider
white / grey / black



4003
end spring
white

Mounting



2614
screw crosshead,
3x20mm

Optional parts

Curtain transport



4002-08-M-N
end stop
metal



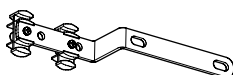
4007
rotating glider
white / grey / black



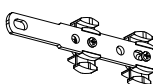
4007-LRS-10-GR
LR glider
grey



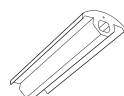
4007-LRS-20-R
LR glider
red



4074-1000
carrier with overlap,
a.o. for draw rod
white / natural
metallic / black



4075-1000
carrier without
overlap
white / natural
metallic / black



4145
flexible dust
cover

Accessories



2004
brake glider
white / grey / black



KVT-T1
draw rod
100 / 125 / 150 /
200 / 300 cm
white / natural
metallic / black /
transparent

Flow - accessories compatible

Technical specifications are subject to change
without prior notice.

Copyright: Fotografie The Duke, Dré Wouters,
The Art of Living magazine

Qurails[®]
Open a new experience