

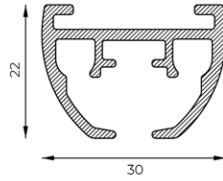
# 5600



## mounting

### profile

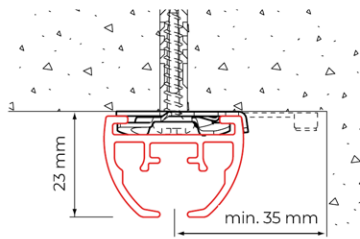
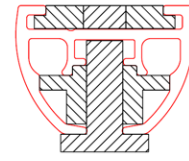
**5600**  
492 gr/m



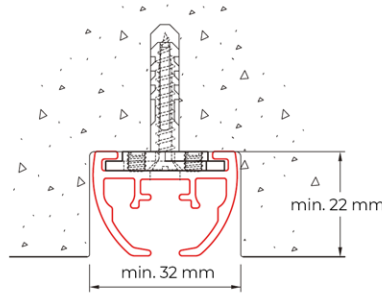
### bending

**radius cm**  
R 20 (1015)  
R 30 (1015)  
R >100 (1018)

### filler position

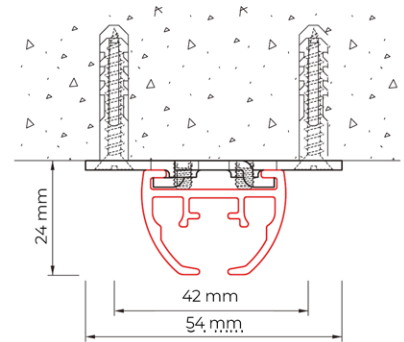


ceiling mounting with ceiling mounting clamp 6050: leave space to allow rotation of ceiling mounting clamp

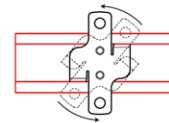


recessed mounting to or in ceiling with bracket 6055-2000

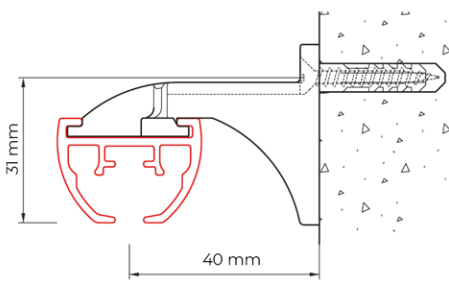
- when mounting in ceiling, take into account the wider pulleys
- curved systems: bend profile first then use as template for the rebate
- pre-drilling of profile by Qurails



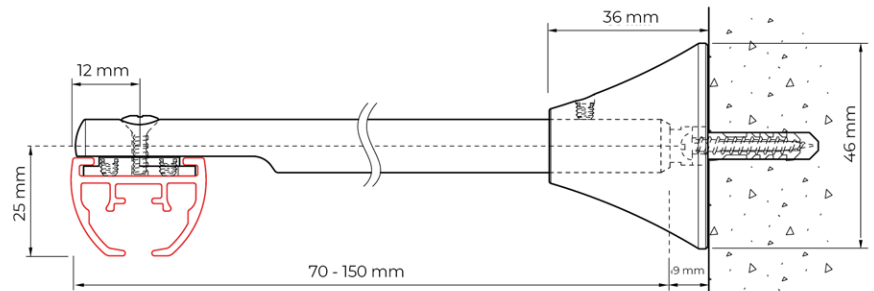
ceiling mounting with ceiling bracket 6055-1000



assembly: rotate in place and secure

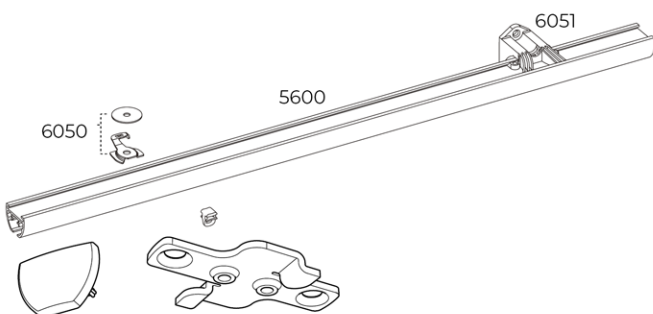


wall mounting with wall bracket 6051



wall mounting with trimmable extension bracket 6017

## Exploded view



## G-Norm

