

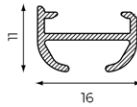
4600



mounting ceiling

profile

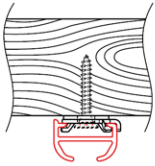
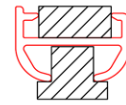
4600
137 gr/m



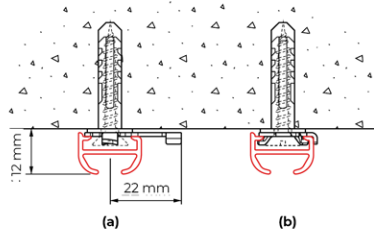
bending

radius cm
R 10 (1012)
R 10 (1015)
R > 80 (1018)

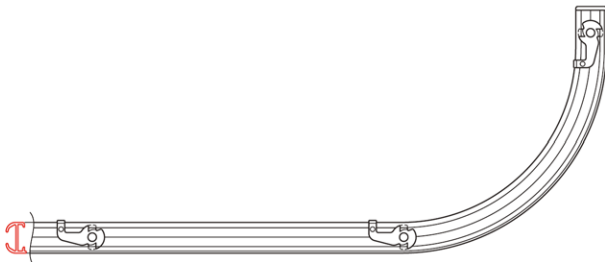
filler position



ceiling mounting with ceiling mounting clamp 2650 (incl. washer), with wood screw 261.



ceiling mounting 4600 with ceiling mounting clamp 2650 + washer, before (a) and after (b) fastening the ceiling mounting clamp



when mounting a curved rail, place a ceiling mounting clamp before as well as after the curve

G-Norm

